

Plastic Ocean

Our ocean has no boundaries, and when it comes to rubbish in the sea, that means it's everyone's problem.

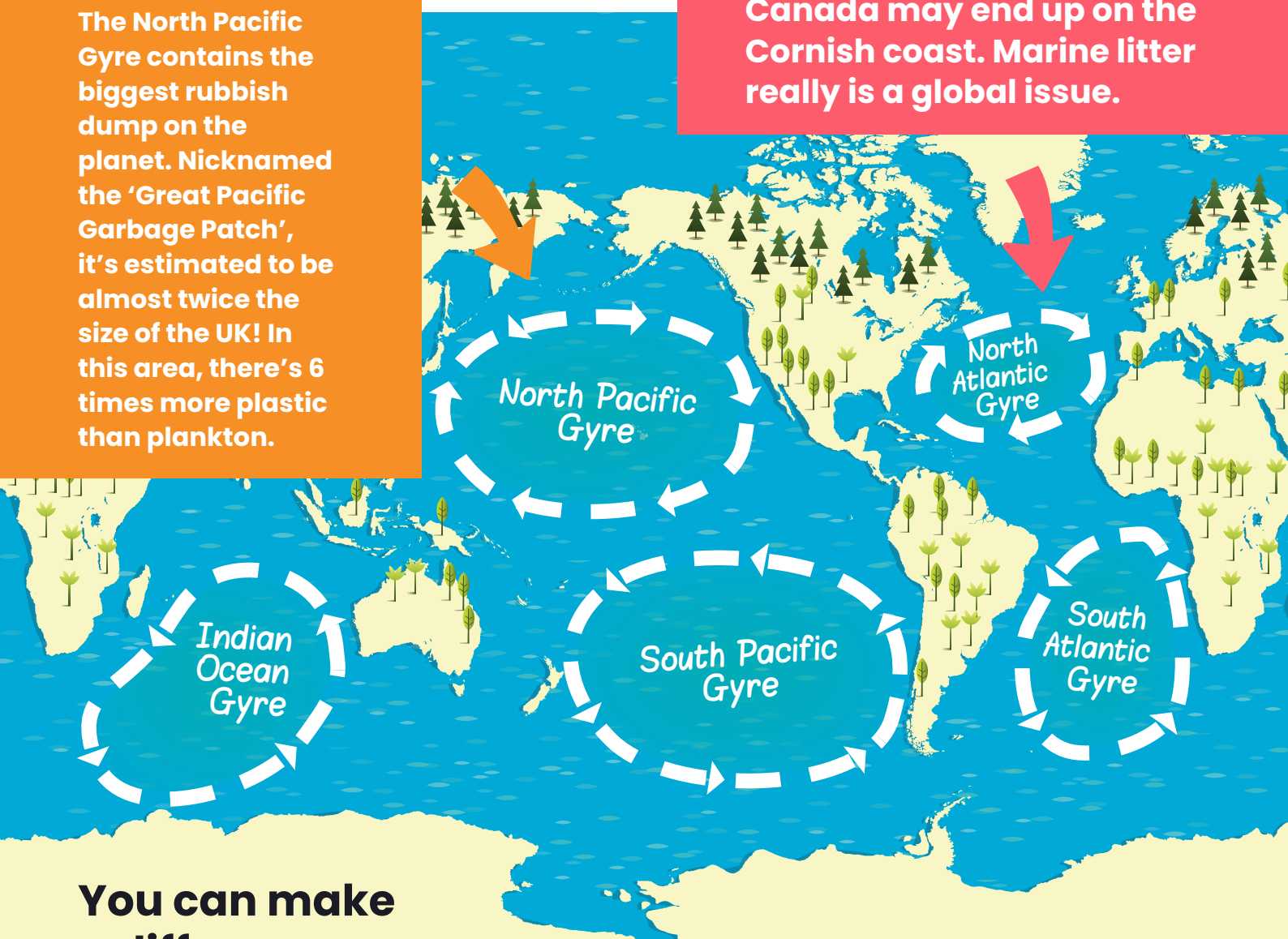
All caught up

Gyres are large rotating currents in our ocean where water spirals around. It's where much of the litter that is floating in the sea collects. The five main gyres across the globe collect man-made debris, especially plastic objects.

Floating rubbish dumps

The North Pacific Gyre contains the biggest rubbish dump on the planet. Nicknamed the 'Great Pacific Garbage Patch', it's estimated to be almost twice the size of the UK! In this area, there's 6 times more plastic than plankton.

A plastic bottle dropped in Canada may end up on the Cornish coast. Marine litter really is a global issue.



You can make a difference

Never drop litter, reduce the amount of plastic you use and recycle more.